



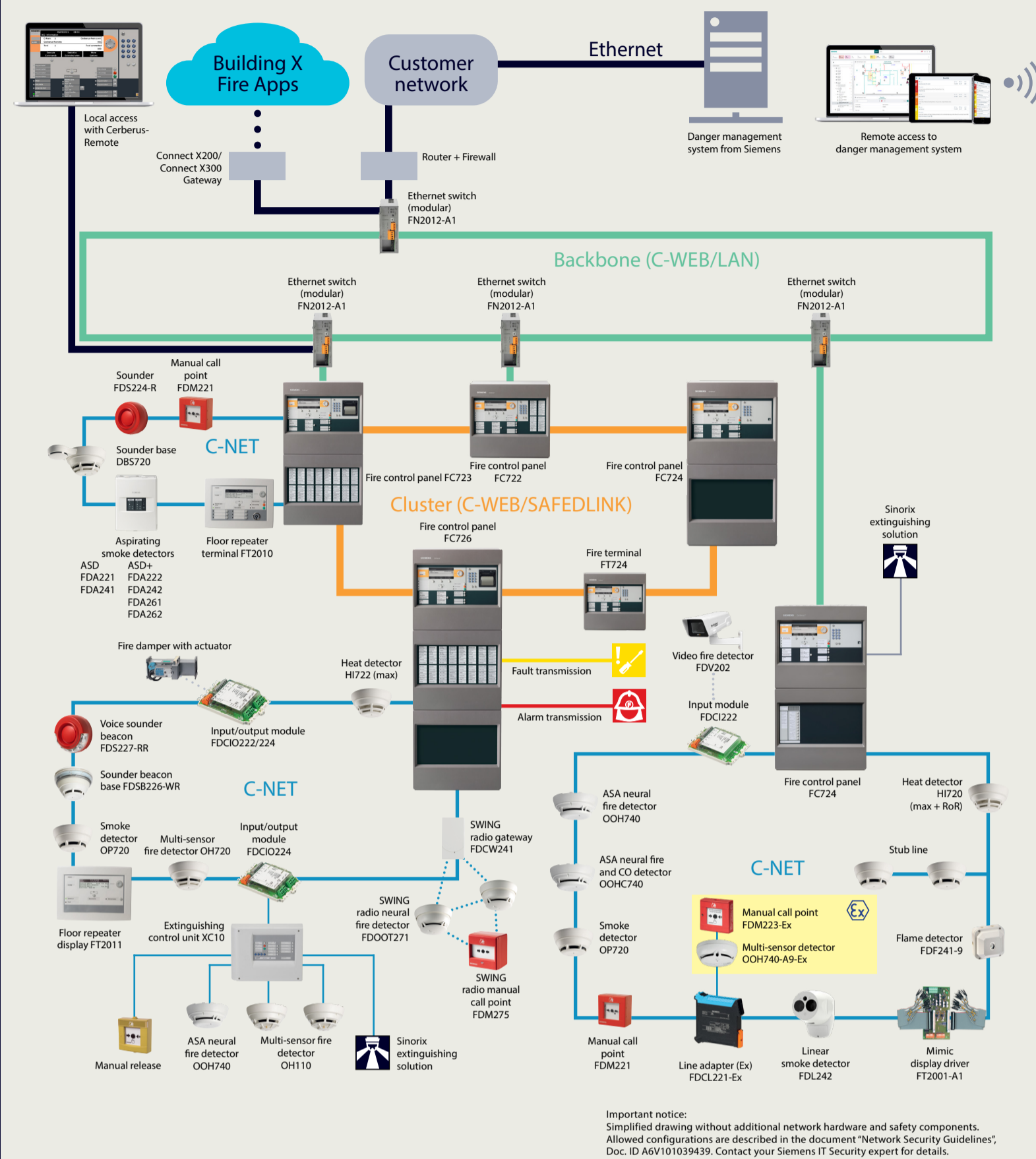
SMARTER PROTECTION MATTERS

Cerberus PRO Panels, network and accessories

Planning Tool

Cerberus PRO – Because smarter protection matters

IoT-enabled fire control panels, clever fire detectors, smart peripheral devices: Our products & solutions allow you to protect your building and its occupants all year-round, connect with it anytime from anywhere via the Building X Fire Apps, and sustain undisturbed places all day, every day for peace of mind. The overview below demonstrated the most important components.



Panel overview compact

	FC721-ZZ1-YZ	FC722-ZZ1-YZ	FC722-ZAI-ZE	FC724-ZAI-ZE	FT724-ZZ
Housing Eco					
Mains voltage	- AC 97...127 V - AC 196...253 V	- AC 97...127 V - AC 196...253 V	- AC 97...127 V - AC 196...253 V	- AC 97...127 V - AC 196...253 V	-
Power supply	70 W	70 W	150 W	150 W	option PSU 70 W
Operating voltage	DC 21...28.6 V	DC 21...28.6 V	DC 21...28.4 V	DC 21...28.4 V	DC 21...28.4 V
Operating current	max. 2.5 A	max. 2.5 A	max. 5 A	max. 5 A	125 mA
Battery capacity	2x 12 V, 7 Ah	2x 12 V, 7...12 Ah	2x 12 V, 26 Ah	2x 12 V, 26 Ah	option 2x 12 V, 7 Ah
Emergency power supply	up to 72 h ¹⁾	up to 72 h ¹⁾	up to 72 h	up to 72 h	up to 72 h
Connectable detector series	Cerberus PRO FD720 (C-NET)	Cerberus PRO FD720 (C-NET)	Cerberus PRO FD720 (C-NET)	Cerberus PRO FD720 (C-NET)	-
Number of lines (with loop extension)	1	2 (4)	2 (4)	4 (8)	-
Number of addresses	max. 126	max. 252	max. 252	max. 504	-
Networkable	-	✓	✓	✓	✓
Integrated inputs/outputs					
Relay outputs					
• RT alarm	1	1	1	1	-
• RT fault	1	1	1	1	-
• Monitored outputs	1	1	1	1	-
• Alarm	1	1	1	1	-
• Fault	1	1	1	1	-
• Horn	1	1	1	2	-
• Freely programmable inputs/outputs	4	8	8	12	-
Operating unit	integrated	integrated	integrated	integrated	integrated
Display groups integrated, each with one red, green and yellow LED	-/up to 24	-/up to 24	-/up to 48	-/up to 48	-
Display groups optional, each with one red, green and yellow LED	up to 96 ¹⁾ /-	up to 96 ¹⁾ /-	up to 96/up to 96	up to 96/up to 96	up to 96 ¹⁾
Plug-in position for RS232, RS485 serial ports	1	2	2	2	2
Ethernet connection RJ45	1	1	1	1	1
Dimensions (WxHxD)	430x398x80 mm	430x398x160 mm	430x796x160 mm	430x796x160 mm	430x398x80 mm
Approvals	0786-CPR-20767 - VdS - LPCB	0786-CPR-20721 G209076 126bn	0786-CPR-20721 G209076 126bn	0786-CPR-20722 G209077 126bn	- G209078 126bn

¹⁾ with additional housing and power supply, ²⁾ with extra housing

Panel overview modular

	FC723-ZA	FC726-ZA	Combined fire and ext. control panel
Housing Eco			
Mains voltage	- AC 98...127 V - AC 196...253 V	- AC 98...127 V - AC 196...253 V	-
Power supply	150 W	150 W	-
Operating voltage	DC 21...28.4 V	DC 21...28.4 V	-
Operating current	max. 5 A	max. 5 A	-
Battery capacity	2x 12 V, 26 Ah	2x 12 V, 26 Ah	-
Emergency power supply	up to 72 h	up to 72 h	-
Connectable detector series	Cerberus PRO FD720 (C-NET)	Cerberus PRO FD720 (C-NET)	-
Number of lines (with loop extension)	2 (4)	4 (8)	-
Number of addresses	max. 8	max. 20	-
Networkable	✓	✓	✓
Integrated inputs/outputs			
Relay outputs			
• RT alarm	1	1	-
• RT fault	1	1	-
• Monitored outputs	1	1	-
• Alarm	1	1	-
• Fault	1	1	-
• Horn	1	2	-
• Freely programmable inputs/outputs	8	12 (72) ¹⁾	-
Operating unit	integrated	integrated	-
Display groups integrated, each with one red, green and yellow LED	-	-	-
Display groups optional, each with one red, green and yellow LED	up to 96	up to 96	-
Plug-in position for RS232, RS485 serial ports	2	2	-
Ethernet connection RJ45	1	1	-
Dimensions (WxHxD)	430x796x160 mm	430x796x260 mm	-
Approvals	0786-CPD-21328 G214021 126bn	0786-CPD-20983 G210084 126bn	-

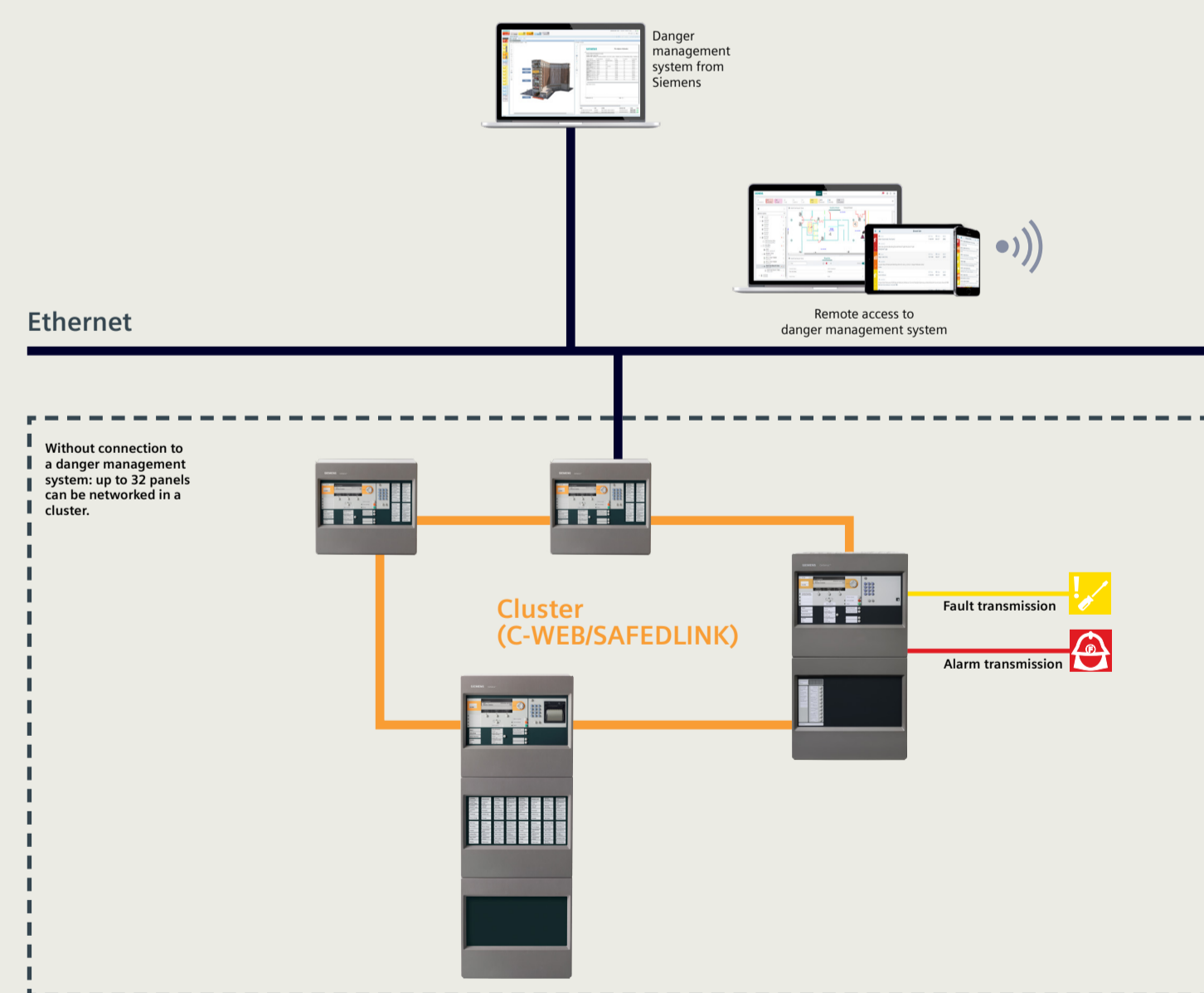
¹⁾ with additional input/output cards FC1208-A1

Single-sector extinguishing panel

	FC722-ZA or FC724-ZA
Consisting of:	- Fire control panel - Extinguishing control kit - Extinguishing terminal Optional: - Extinguishing terminal
Technical data extinguishing card	FC722-ZA, FC724-ZA
Monitored collective inputs	max. 4 (e.g. Manual release and Emergency hold (all points)) max. 8, collective
Monitored inputs	max. 6 (e.g. Loss of agent, Discharged contact...) If collective inputs not used: 10 max. 64 (parallel, normally opened)
Non-monitored driver outputs	max. 6 Circuit Open drain, Short-circuit-proof 40 mA
Technical data extinguishing terminal	
Number of participants per sector	primary 1, secondary max. 5
Cable length	primary max. 10 m, secondary max. 1200 m
Supply input	DC 21...30 V
Operating current per terminal	25 mA typical @DC 24 V
Indication LEDs	34 LEDs
Indication Display	4 digits 5x7 dot matrix
Data sheet	A6V11480005

Topology 1

Up to 16 panels can be networked in a cluster (C-WEB/SAFEDLINK) – if connected to a danger management system. Without a danger management system, even up to 32 panels can be networked.



Characteristics of topology example

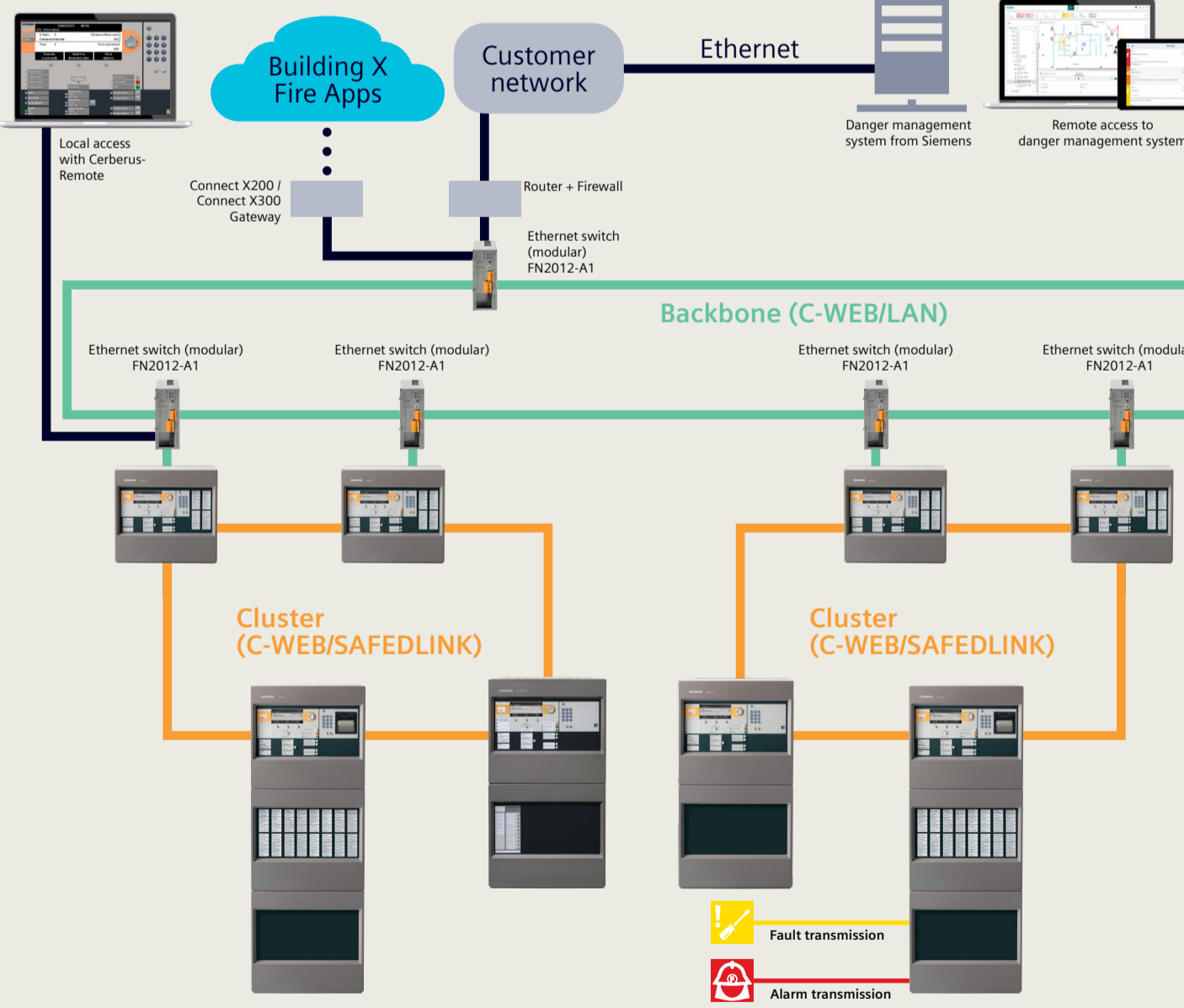
- Easy networking of panels
- Operation of panels as standalone solution or networked with a total length of up to 1,280 km
- Data rate can be adapted to line quality

Key data

- Max. number of networkable panels:	32
- Max. number of networkable panels if connected to a danger management system:	16
- Max. distance between panels with copper cable:	
• without repeater:	1 km
• with repeater:	2 km
- Max. distance between panels with fiber-optic cable:	
• multi mode:	4 km
• single mode:	40 km
- Max. number of panels with system-wide view:	5

Topology 2

Up to 64 panels in one EN 54-conform system with different combinations of clusters and backbone – and with connection to a danger management system via a customer network.



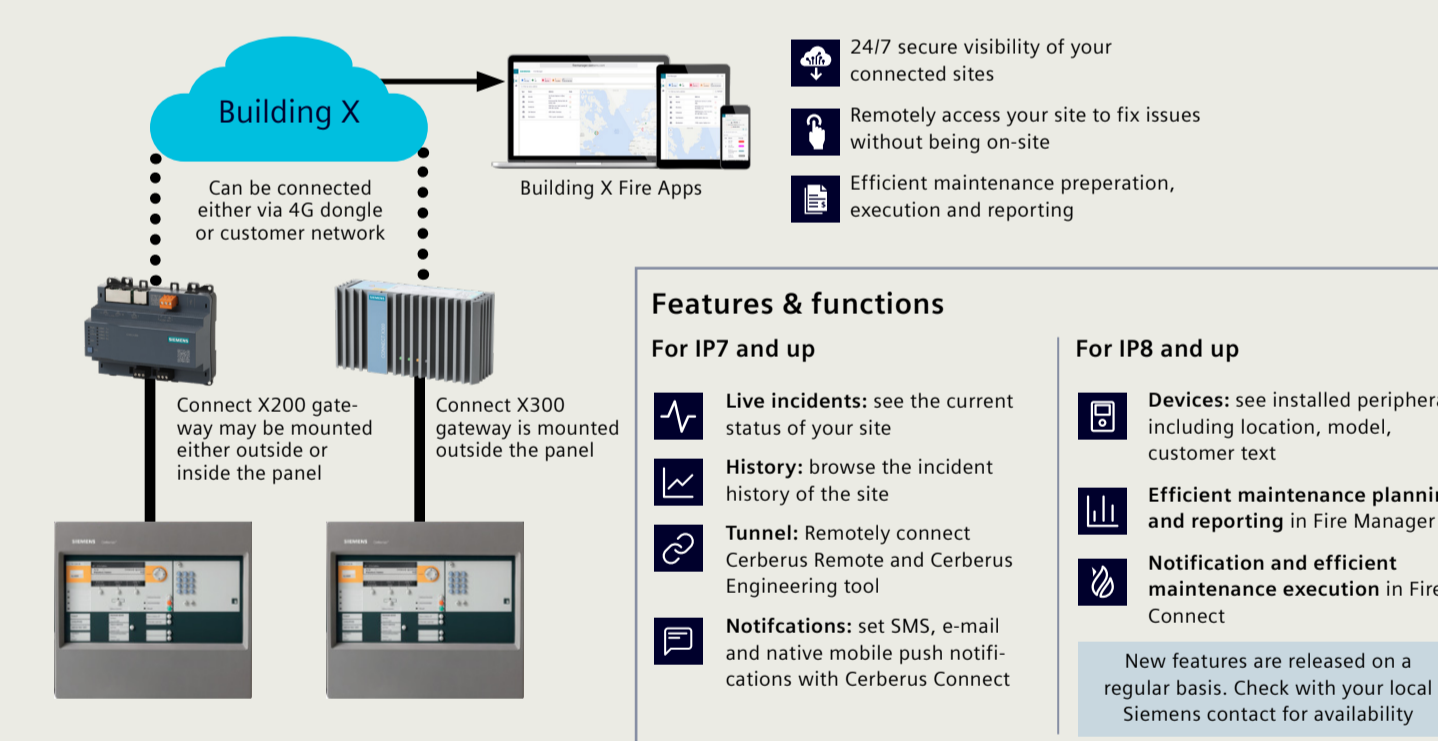
Characteristics of topology example

- EN 54-conform networking of up to 64 panels via backbone
- Very large networks spanning long distances
- Highest system availability thanks to system-wide redundancy
- Panels on different clusters can communicate with each other
- Only one remote transmission to fire brigade over entire system necessary
- Distributed building complexes can be ideally protected
- Backbone is realized with fiber-optic cable

Key data

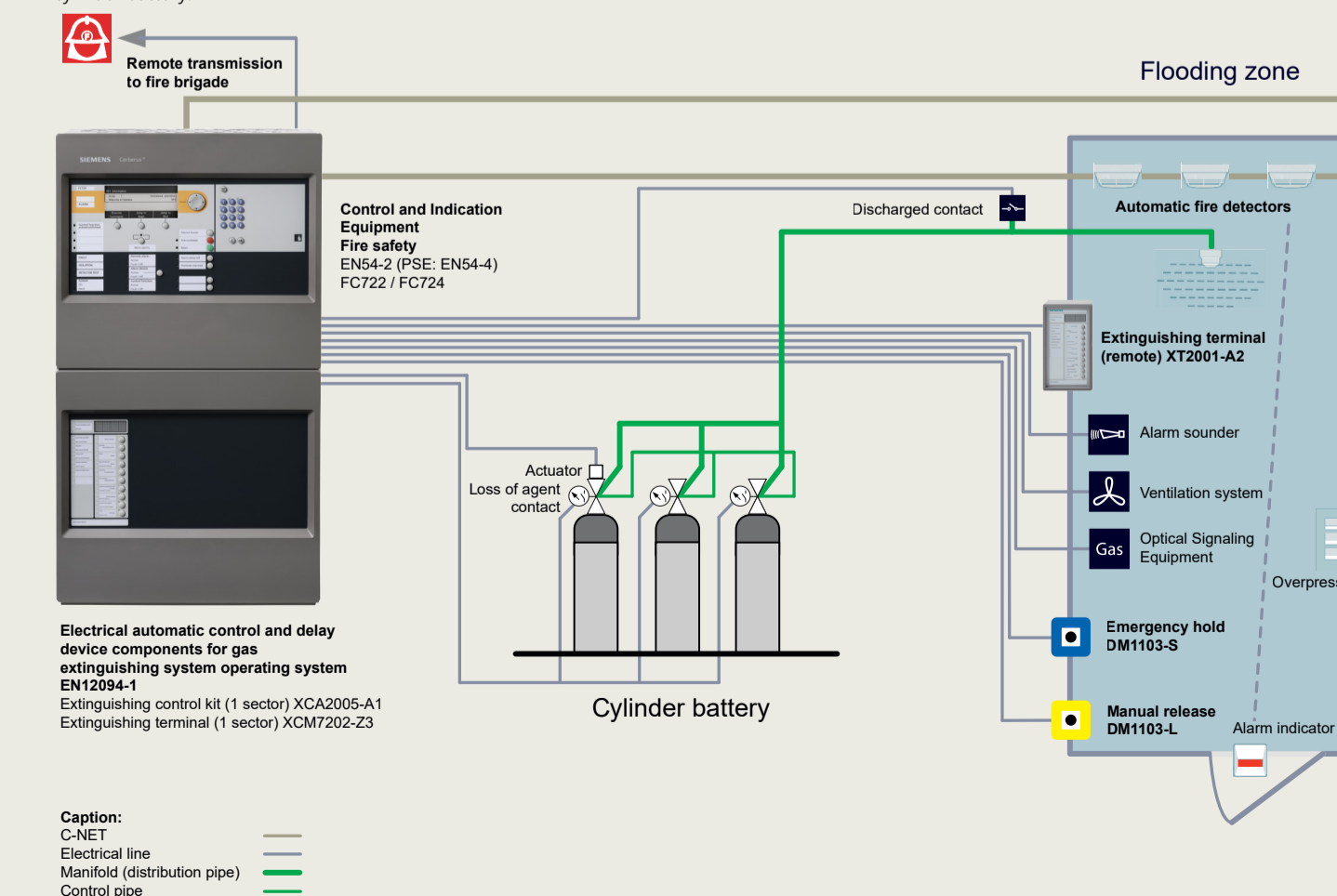
- Max. number of networkable panels incl. clusters (EN 54-conform):	64
- Max. number of clusters:	14
- Max. number of networkable panels per cluster:	16
- Number of panels with system-wide view:	5

Building X Apps offering



Integrated Extinguishing control planning

Single-sector extinguishing
Combined fire detection and extinguishing control panel FC20 operating as a single-sector extinguishing system. FC20 works with most types of extinguishing systems for room or object protection. A single-sector installation consists of a single flooding zone and cylinder bank. In case of a fire, the extinguishing agent flows through the manifolds to the flooding zone and is distributed there by the nozzles. The system can be optionally configured with a reserve cylinder battery.



Caption:
Electrical automatic control and delay device components for gas extinguishing system operating system EN1084-1
Extinguishing control kit (1 sector) XCA2005-A1
Extinguishing terminal (1 sector) XCM7202-Z3

© Siemens Switzerland Ltd. 2023
are binding only when they are expressly agreed upon in the concluded contract.
course of further development of the products. The requested performance features
specifically reflect those described, or which may undergo modification in the
contains general descriptions and/or performance features which may not always
subject to changes and errors. The information given in this document only
Article no. BT_0149_EN (Status: 10/2023)
Published by
Siemens Switzerland Ltd 2021
Building Technologies Division
Thalstrasse 18
6900 Zug
Switzerland
Tel +41 58 724 24 24

Smart infrastructure intelligently connects energy systems,
buildings and industries to adapt and evolve the way we live
and work.
We work together with customers and partners to create an
ecosystem that intuitively responds to the needs of
people and helps customers to better use resources.
It helps our customers to thrive, communities to progress
and supports sustainable development.
Creating environments that care.
Siemens.com/smart-infrastructure

